



2024 ICF CANOE MARATHON WORLD CHAMPIONSHIPS MASTERS

16 and 17 September
Metkovic, Croatia

INFORMATION FOR MASTERS

THERE WILL BE NO BRIEFING BEFORE THE RACE

ALL INFORMATION FOR MASTERS WILL BE INCLUDE IN THIS DOCUMENT OR AT THE ACCREDITATION/INFO CENTRE

ACCREDITATION

For Masters, every competitor must collect the accreditation themself.

ALL INFORMATION FOR MASTERS IS WRITTEN IN THIS HANDBOOK

YOU CAN FIND LATEST INFORMATION AT THE NOTICEBOARDS

PROVISIONAL TIMESCHEDULE, SEE THE CORRECT ONE ON THE NOTICBOARDS

SINGLE CLASSES – Still to be finalised based on entries 5.09

RACE	DATE	TIME	BOAT	GENDER	AGEGROUP	Laps	Small lap	Portages	Prov Entry
1	16-sep	09:00	K1	men	65-69	4	1	0	25
2	16-sep	09:05	K1	men	70-74	4	1	0	17
3	16-sep	09:05	K1	men	75-79	4	1	0	1
4	16-sep	09:10	K1	women	65-69	3	1	0	5
5	16-sep	09:10	K1	women	70-74	3	1	0	1
6	16-sep	09:10	K1	men	80-84	3	1	0	3
7	16-sep	09:10	C1	men	65-69	3	1	0	5
8	16-sep	09:10	C1	men	70-74	3	1	0	
9	16-sep	11:00	K1	men	35-39	5	1	4	18
10	16-sep	11:05	K1	men	55-59	5	1	4	22
11	16-sep	11:10	C1	men	35-39	3	1	2	1
12	16-sep	11:10	C1	men	40-44	3	1	2	2
13	16-sep	11:10	C1	men	45-49	3	1	2	1
14	16-sep	11:10	C1	men	50-54	3	1	2	4
15	16-sep	11:10	C1	men	55-59	3	1	2	1
16	16-sep	11:10	C1	men	60-64	3	1	2	4
17	16-sep	11:15	C1	Women	All	3	1	2	
		13:00	AWARD CEREMONY RACE 1 to 8						
18	16-sep	13:30	K1	men	45-49	5	1	4	18
19	16-sep	13:35	K1	men	60-64	5	1	4	27
20	16-sep	13:40	K1	women	35-39	4	1	3	7
21	16-sep	13:40	K1	women	40-44	4	1	3	5
22	16-sep	13:40	K1	women	45-49	4	1	3	3
		15:30	AWARD CEREMONY RACE 9 to 17, FOLLOWED BY 18 TO 22						
23	16-sep	16:15	K1	men	40-44	5	1	4	13
24	16-sep	16:20	K1	men	50-54	5	1	4	19
25	16-sep	16:25	K1	women	50-54	4	1	3	16
26	16-sep	16:25	K1	women	55-59	4	1	3	15
27	16-sep	16:25	K1	women	60-64	4	1	3	3
		18:00	AWARD CEREMONY RACE 23 to 27						

PRIZE CEREMONY ONLY FOR RACES WITH MORE THAN 2 FINISHERS, WORLD CHAMPIONSHIPS 4 FINISHERS

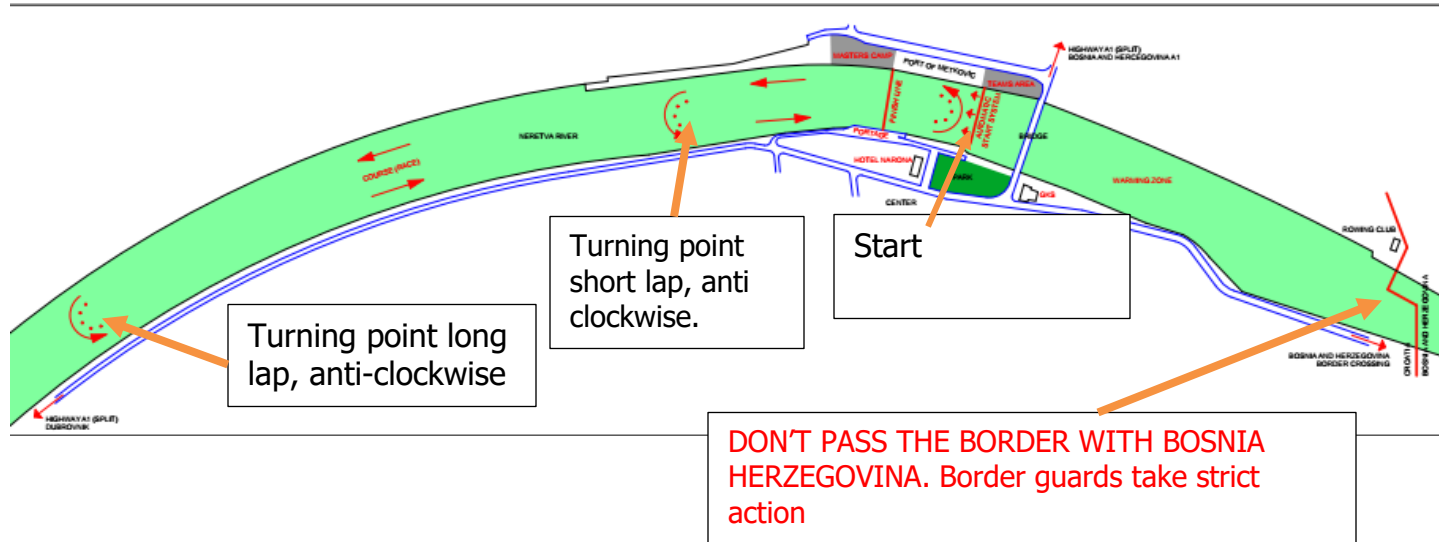
LESS THAN 3 FINISHERS, MEDALS WILL BE PRESENTED AT THE INFO DESK

DOUBLE - Still to be finalised based on entries based on entries 5.09

RACE	DATE	TIME	BOAT	GENDER	AGEGROUP	LAPS	Small lap	Portages	Provisional entries	
27	17-sep	09:00	K2	men	65-69	4	1	0	18	
28	17-sep	09:00	K2	men	70-74	4	1	0	6	
29	17-sep	09:00	K2	men	75+	4	1	0		
30	17-sep	09:00	K2	women	65+	3	1	0	1	
31	17-sep	13:45	C2	men	65+	3	1	0	4	
32	17-sep	09:05	K2	women	40-44	4	1	3	1	
33	17-sep	09:05	K2	women	45-49	4	1	3	7	
34	17-sep	09:05	K2	women	50-54	4	1	3	9	
35	17-sep	09:05	K2	women	55-59	4	1	3	8	
36	17-sep	09:05	K2	women	60-64	4	1	3		
37	17-sep	11:00	K2	men	35-39	5	1	4	15	
38	17-sep	11:05	K2	men	40-44	5	1	4	13	
39	17-sep	11:10	K2	men	45-49	5	1	4	19	
40	17-sep	11:10	K2	men	50-54	5	1	4	9	
41	17-sep	11:15	K2	men	55-59	5	1	4	14	
42	17-sep	11:15	K2	men	60-64	5	1	4	13	
		13:00	AWARD CEREMONY RACE 27-36							
43	17-sep	13:45	C2	men	35-39	3	1	2	3	
44	17-sep	13:45	C2	men	40-44	3	1	2	2	
45	17-sep	13:45	C2	men	45-49	3	1	2		
46	17-sep	13:45	C2	men	50-54	3	1	2	4	
47	17-sep	13:45	C2	men	55-59	3	1	2		
48	17-sep	13:45	C2	men	60-64	3	1	2	1	
49	17-sep	13:45	C2	Women	All	3	1	2		
		13:50	AWARD CEREMONY RACE 31-42							
50	17-sep	16:00	K2	mix	35- 49	4	1	3	18	
51	17-sep	16:05	K2	mix	50-64	4	1	3	14	
52	17-sep	16:10	K2	mix	65+	3	1	0	5	
53	17-sep	16:15	C2	mix	All	3	1	0	1	
		18:00	AWARD CEREMONY RACE 37 to 45 FOLLOWED BY 43-53							

PRIZE CEREMONY ONLY FOR RACES WITH MORE THAN 2 FINISHERS, WORLD CHAMPIONSHIPS 4 FINISHERS

LESS THAN 3 FINISHERS, MEDALS WILL BE PRESENTED AT THE INFO DESK



After the start, you have to go downstream around the turning point (anti-clockwise) and then upstream, anti-clockwise turning point near start line, and after the last portage you have done another small lap (also anti-clockwise) to the finish between 2 buoys with flags on them.

All turning points are anti clockwise

There is a Jetty Disembarkation. The running distance of the portage is about 100 metres with a pontoon embarkation.

NO PORTAGE AFTER THE FIRST LAP FOR PADDLERS WHO HAVE TO PORTAGE, SO THE FIRST PORTAGE IS AFTER 7.2 KM

THE REGATTA VENUE



RAFTMARSHAL

Accreditation centre

<ul style="list-style-type: none"> 1 HOTEL NARONA - ICF <ul style="list-style-type: none"> • MEDICAL ROOM • ANTI-DOPING ROOMS • ATHLETE CLASSIFIERS ROOM/PRESS 2 PARKING ZONE (VIP, ICF, PRESS), BUS STOP 3 INFO POINT 4 ACREDITATION CENTER <ul style="list-style-type: none"> • TEAM MEETING 5 OPENING CEREMONY 6 PARA-ATHLET'S AREA 7 PORTAGE 8 GRAND STAND 9 MEDAL AWARD PODIUM 10 BIG SCREEN 11 PRESENTATION ROOMS (COMMENTATORS & ANNOUNCER) 12 VIP AREA 	<ul style="list-style-type: none"> 13 FOOD/DRINKS 14 ATHLET'S LUNCH 15 CAM ROOM (ICF) 16 RESCUE AREA 17 LOCAL SHOPS 18 FINISH LINE ROOM 19 MIXED ZONE 20 BOAT REPAIR / BOAT PRESENTATION 21 TEAM TENTS 22 BOAT RACKS 23 BOAT CONTROL 24 TOILETS 25 BUS STOP 	<p>RESTRICTED AREA</p> <ul style="list-style-type: none"> MASTERS AREA AND TRAILERS PARKING ZONE TEAMS AREA PORTAGE PONTOONS PARA-ATHLET'S RAMP ENTRANCE TO THE ZONE
--	--	---

PORTAGE

The start, finish line and the portage will be in the same area. The portage is placed on the bank of the river in between the start and finish line. The portage length is according to the ICF rules. Disembarkation is on the pontoons by dock. Embarkation is on the pontoons. Running surface is flat, concrete covered with carpet.



NO MEDAL CEREMONY IF LESS THAN 3 MEDAL WINNERS ARE PRESENT FOR THE MEDAL CEREMONY.



2. OFFICIALS WORLD CHAMPIONSHIPS MASTERS

Chief Official	Ruud Heijselaar	ICF
Chief Course Umpire	Tim Cornish	ICF
Safety Officer/Dep.Chief Official	Stien Verlinden	ICF
Dept. Chief Course Umpire & Safety officer	Brian Chapman	ICF
Chief Finish Line		NTO
Chief Raft Marshall	Elly Onnekes	NED
Chief Portage Umpire	Delia Merayo	ESP
Starter	Marian Sarbu	BEL
Umpires	Suzanne Britt Teryy Newsome	USA NZL
ITO's & NTO's		

3. Provisional start-list



OR <https://memosoft.spotfokus.com/timetable/eventdetail/115/ICF-CANOE-MARATHON-MASTERS-WORLD-CHAMPIONSHIPS-2024>



4. **Paddlers and their personal ID**

SEE NOTICE BOARDS AND WRITTEN INFORMATION AT INFO POINT

5. **ACCREDITATION**

Accreditation for the World Championships masters will be included within the package for each paddler, if there are any discrepancies or items missing would you please refer to the accreditation desk.

PASSPORT/ID COPY FOR ATHLETES

All masters are requested to show **passport/ID copy for athletes** at accreditation office.

Those without Insurance, they sign a paper that relieves the organization from liability if an accident occurs.

The organization is not responsible for losing or damaging of personal items.

The desk will be open for masters Saturday September 14 from 08:00 to 20:00, Saturday, Sunday, Monday and Tuesday

Whilst it is the organizer's objective to keep restrictions down to a minimum it is inevitable that there must be some area, which will require restricted access.

For masters there is no access to the boatshed after Wednesday September 18, 15:00.

All will have to use the main car park.

6. **DISSEMINATION OF INFORMATION**

There will be an info office adjacent to the athletes area.

Notices, signposting the various areas will be prominently displayed.

Notices, changes to the programme and any information that is necessary to give to the masters paddlers will be available at the several notice boards.

7. **BOAT MEASURING**

There will be no boat measuring before the race only the numbers will be checked at the raft marshal.

8. **BOAT NUMBERING**

The boats will be numbered with vertical plastic numbers provided at the raft marshal place and these will be fixed on to the boat by the means of a plastic slot, which must be screwed, to the deck of the boat. **The numbers must be secured to the slot with a pin inserted through the hole in the slot and the number. This will prevent the number falling off during a portage. If number is not turned in there will be a 10 euro fee.**

All paddlers will ensure that all boats are equipped with suitable number slots with a hole in them.

The boat numbers will be distributed after confirmation of the entries.

The number boards will be number coded per age group and numbers allocated in a format to make class identification possible where different classes are starting in the same start.

Boat repairs or assistance with boat problems will be provided by the officials and they should consult the main repair official who will be available in the boats shed area.

9. **START PROCEDURE**

Starter is Marian Sarbu.

The start will be from behind an automatic starting gate.

All classes start positions have been completed by random draw and you will find the draw positions on the website and at the event notice boards.

The draw positions are numbered from the left facing in the direction of the course.

Boats will line up in a numerical order and will be checked by the starter and aligner.

Launching on to the water will only be from the indicated rafts and this will be a controlled area, the officials will check each person's boat on to the water. The boat must be in an undamaged state.

Paddlers will only be allowed onto the water with their correct boat and also must be correctly attired in their National or club racing dress.

The warm up area will be in the area behind the starting gate. The starter will call the paddlers to the start line.

Please note that 500 meters upstream is the border with Bosnia-Herzegovina and crossing the border is not allowed. Border guards take strict action.

Please ensure that paddlers approach their start as quickly as possible in order that the starts may commence on time.

ALL BOATS RACING HAVE TO BE ON THE WATER WELL BEFORE THEIR START TIME. RAFT MARSHALLING WILL CLOSE 5 MINUTES BEFORE START TIME OF THE SESSION. BOATS HAVE TO PASS THE RAFT MARSHALLING, OTHERWISE THEY ARE CONSIDERED NOT TO START.



THE STARTER WILL NOT WAIT FOR LATE PADDLERS.

The starter commands will be clearly heard by all the competitors through loud speakers placed at points along the starting gate.

All his commands will be in English and the start command will be READY - GO

Please note rule 10.12 and the possibility of time penalties.

The timing and race results will be dealt with at the finish control and access to this area will only be available to the Competition Committee and main event officials.

Video finish equipment is installed and will be used where applicable.

The finish line is between two white buoys with red flags on it. The exact line will be on or slightly before the buoys line. An audible signal will identify the finish of each paddler.

After the finish the competitors have to paddle beyond the line and disembarking at the same place where they got onto the water. **Care must be taken as finished paddlers will need to cross the path of paddlers that will be still crossing from the bottom turn to the portage for the last short lap.**

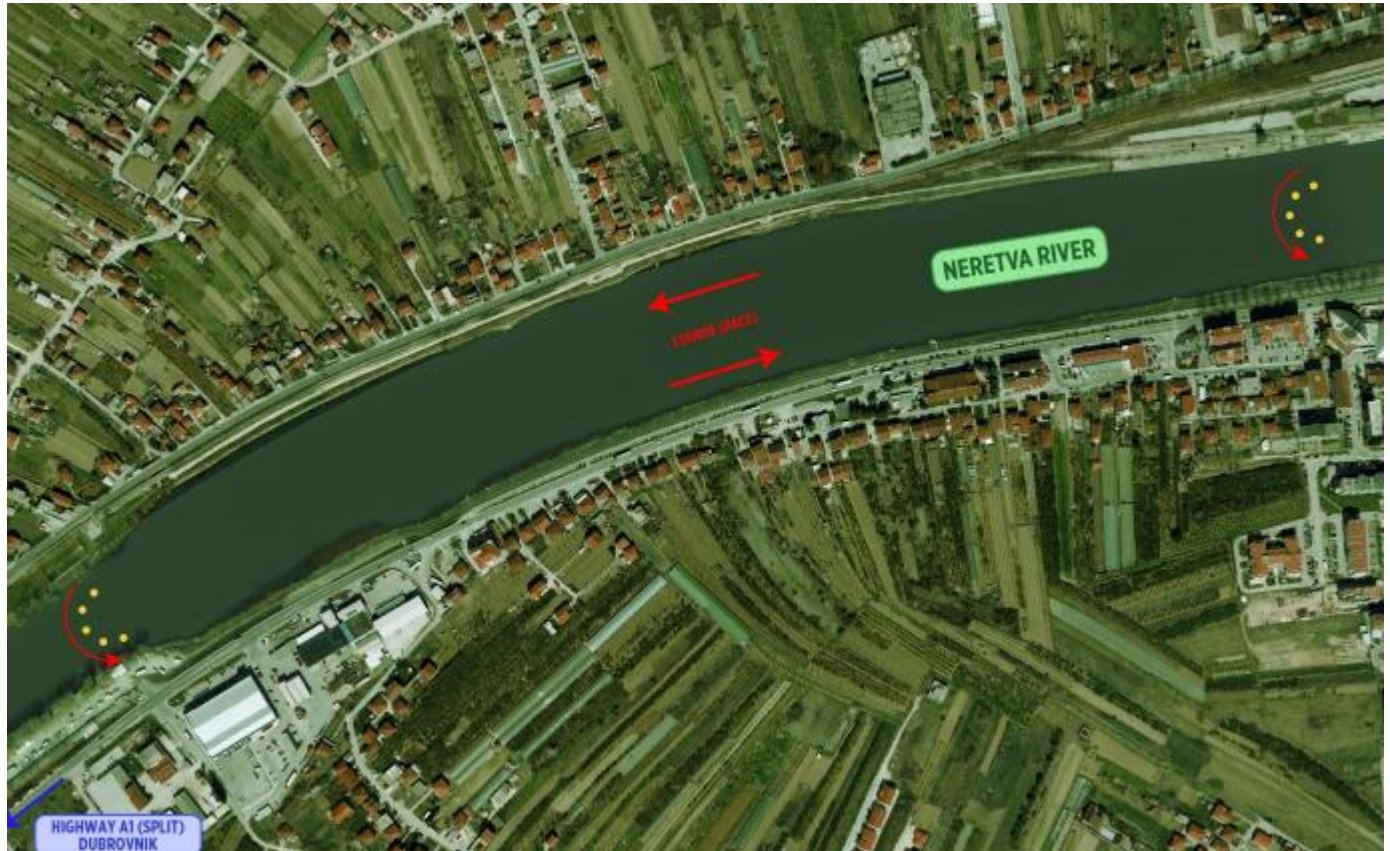
10. **FINISH AREA**

Paddlers should clear the finish area as soon as possible on the route described previously and must not under any circumstances cross the finish line twice. The finish line is between 2 buoys with flags on it.

To be careful to avoid obstructing boats still racing around the turn.

All disembarkation must be at the same place where you embarked before your race.

|



11. **PORTAGE RESTRICTIONS**

Due to the high number of paddlers, the marshals who will be in control of the portage area will be strict and if you are not giving drinks or food to competitors you are not allowed to be in the feeding area at all.

None of the helpers are allowed to enter the non-feeding area or support over the separating barrier.

Marshals will be instructed to ask other helpers to stay behind the barriers.

With competitors running at high speed, with canoes on their shoulders, with restricted vision it is important for safety that the marshal's instructions are obeyed.

Helpers should not stop suddenly after helping their paddler as there may well be another boat coming behind them and the paddler of this second boat may not see you. Go to the end of the feeding lane and return to the beginning by the third lane provided.



12. **MEDICAL ATTENTION**

There will be an ambulance stationed at the racing area and because of the radio link with all sections of the course medical assistance can be readily summoned at short notice.

13. **ACCOUNT PAYMENTS**

Please note that all payment for entry fee must be paid by September 15, 20.30 in Euros to the event treasurer who will be found in the Organizers' office.
Acceptable methods of payment: by cash

14. **BOAT STORAGE**

Boats will be able to be stored at the Event venue on racking that can be allocated and there will be 24 hour surveillance to ensure security.

Please advise the event officials if you require any boat storage racking and spaces will be allocated to you.

The boat shed areas will be open to those with a valid accreditation card.

It's very important to note that Masters competitors will only have access to boat area until Wednesday 18 September 15:00

NO ACCESS FOR MASTERS TO THE BOAT STORAGE AFTER THIS TIME.

15. **MEDAL CEREMONY**

The medal ceremony will take place after each session of races on Monday and Tuesday at the Course in front of the portage.

All competitors who are to receive medals should assemble (see noticeboards for time schedule) at the left-hand side of the award area noting the order of the awards will be as follows -

Behind them will be three ladies with the medals on cushions.

The event will be announced and the athletes and officials will march on to the prize giving area.

PLEASE ENSURE THAT ALL PADDLERS RECEIVING MEDALS HAVE FULL NATIONAL OR CLUB TRACK SUITS, WITH NO HATS OR SUNGLASSES .

NO MEDAL CEREMONY IF THERE ARE FEWER THAN 3 FINISHING BOATS AND IF NOT ALL MEDALLISTS ARE PRESENT.

ALL OTHER MEDALS WILL BE GIVEN AT THE ACCREDITATION DESK.

16. **PRESS FACILITIES**

The press area allocated close to the portage will provide with communication facilities.

17. **TRAINING FACILITIES**

The Event venue will be available for all competitors for training in the days before the event.



NO ACCESS FOR MASTERS ON TO THE RACE COURSE DURING THE PARA, SENIORS, UNDER 23 AND JUNIORS WORLD CHAMPIONSHIPS RACES 18 - 22 September.

18. **SAFETY**

There will be motorboats with safety umpires covering all the parts of the course and these will be in radio link with the organisers in case of any problems.

19. **LOCAL INFORMATION**

Details of local information and entertainment will be available from the information desk in the main administrative area.

20. **LATEST INFORMATION**

You can find the latest news (also start lists) on website and notice boards (near info)

IMPORTANT RULES

DISQUALIFICATION FOR UNSPORTSMANLIKE BEHAVIOUR

10.12.1 - Any athlete who attempts to compete in a race by any other than honourable means or who breaks the racing rules, or who disregards the honourable nature of the racing rules will be penalised or disqualified for the duration of the race concerned.

Failing to follow the correct course

10.12.2 - Should an athlete have failed to follow the correct course of the race (for example missed a turning buoy) the athlete has broken the racing rules will be subject to a penalty:

10.12.2.a - If the Race Umpire believes the athlete has gained a small advantage on other athletes: Time penalty of 15 seconds will be given;

10.12.2.b - If the athlete has gained a major advantage a disqualification (DSQ) will be imposed;

10.12.2.c - Should a buoy be missed as a result of a collision in group racing during a turn this will be investigated and the boat that caused the collision will be penalised or disqualified (DSQ), see article 10.12.3. The athlete who missed the buoy due to collision will not be penalised.

10.12.3 - Collision or damage:

10.12.3.a - Any athlete who is considered by a Course Umpire or Race Official to have been responsible for a collision, or who damages the canoe or kayak or paddle of another athlete or unnecessarily deviates from the direct racing line or deliberately blocks the path of an athlete may be penalized or disqualified;

10.12.3.b - A collision will be considered to be an event where an athlete's boat or paddle touches another athlete's boat or paddle in a way that disadvantages another athlete;

10.12.3.c - If it is considered that other paddlers have only had some minor disadvantages compare to other athletes as a result of the incident the responsible athlete will get a time penalty of 30 seconds;

10.12.3.d - If it is considered that the incident has given other paddlers a major unfair disadvantage the penalty will be disqualification (DSQ).

Boat scrutineering infringement

Should a competitor have completed a race in a kayak or canoe which is shown, upon inspection, not to fulfil the ICF classifications, he or she shall be disqualified from the race in question.



Accompanying infringement

10.9.1 - An athlete may not be accompanied along the course or assisted in any way by other canoes/kayaks not entered in the event or by any vessel (e.g., runabout). Such acts shall entail the disqualification of the competitor/s concerned.

Handling of penalties

Time penalties are decided by the Chief Course Umpire and are not subject to appeal.

Time penalties shall be executed in a designated area at the portage and supervised by a race official or will be added to the competitors finishing time if a time penalty stop is not used in the competition.

Disqualifications are decided by the Competition Committee and are subject to appeal.

All penalties or disqualifications by the Competition Committee must be confirmed in writing immediately, giving the reasons. The team leader of the competitor (or the competitor) must acknowledge receipt on a copy of the notice of disqualifications, with the exact time, which marks the start of the protest time.

If a competitor is observed by an International Official to throw a drink bag into the water, they will receive a 30 second penalty. The decision is to be confirmed by the Chief Course Umpire and cannot be the subject of an appeal.

Penalties must be taken at the Penalty box. If there is any penalty, yellow flag will be raised and number will be displayed on a noticeboard at the start of the portage. Paddler has to take the penalty immediately at the portage. If the penalty is not taken on the portage then the penalty will be added to the athlete's race time.